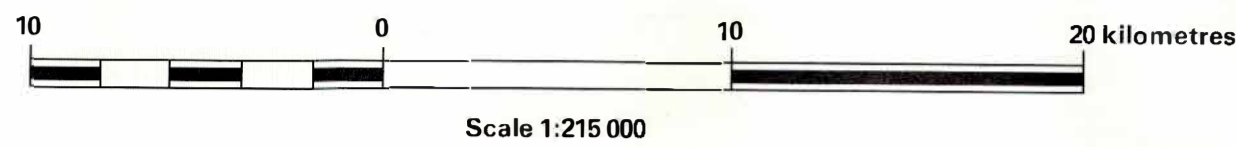


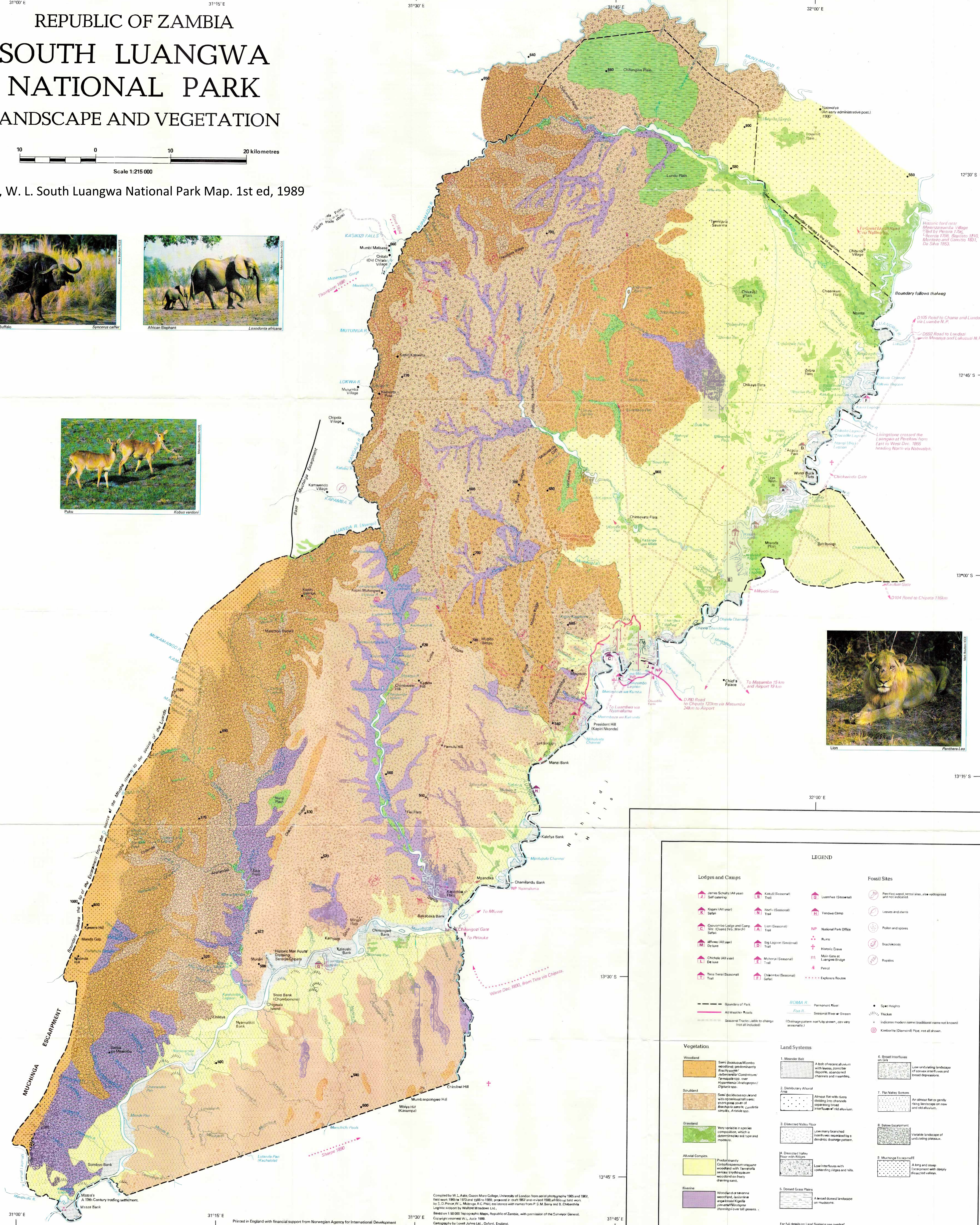
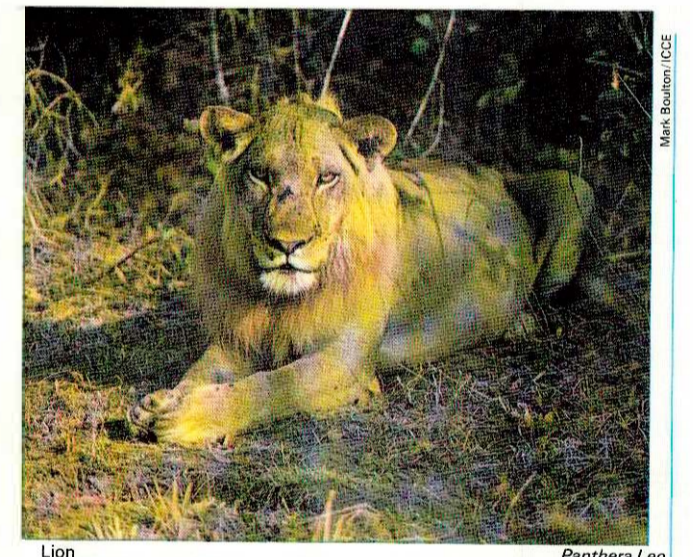
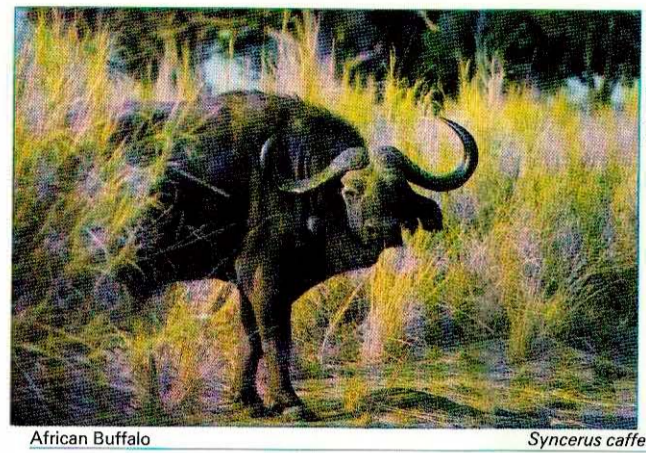
# REPUBLIC OF ZAMBIA

## SOUTH LUANGWA NATIONAL PARK

### LANDSCAPE AND VEGETATION



Astle, W. L. South Luangwa National Park Map. 1st ed, 1989



#### LEGEND

<b>Lodges and Camps</b>	<b>Fossil Sites</b>
<ul style="list-style-type: none"> <li>James Schulz (All year) Self catering</li> <li>Kopim (All year) Safari</li> <li>Columba Lodge and Camp Site (Closed Feb-March)</li> <li>Mhwe (All year) Deluxe</li> <li>Chichela (All year) Deluxe</li> <li>Tano Tano (Seasonal) Trail</li> <li>Kakuli (Seasonal) Trail</li> <li>Nyel (Seasonal) Trail</li> <li>Lon (Seasonal) Trail</li> <li>Big Lagoon (Seasonal) Trail</li> <li>Mochiya (Seasonal) Trail</li> <li>Chimbea (Seasonal) Safari</li> </ul>	<ul style="list-style-type: none"> <li>Purified wood, jute sites, also vetriplast and not indicated</li> <li>Leaves and stems</li> <li>Pollen and spores</li> <li>Brachiopods</li> <li>Rapists</li> <li>Purified wood, jute sites, also vetriplast and not indicated</li> <li>Leaves and stems</li> <li>Pollen and spores</li> <li>Brachiopods</li> <li>Rapists</li> </ul>
<ul style="list-style-type: none"> <li>Boundary of Park</li> <li>All Waste Roads</li> <li>Seasonal Tracks (likely to change into all-weather)</li> </ul>	<ul style="list-style-type: none"> <li>Spot Heights</li> <li>Thickets</li> <li>Indicates modern name (traditional name not known)</li> <li>Kimberlite (Diamond) Pipe, not all shown.</li> </ul>
<b>Vegetation</b>	<b>Land Systems</b>
<ul style="list-style-type: none"> <li><b>Woodland</b>: Semi deciduous Mombasa woodland, predominantly <i>Brachylaena</i> / <i>Acacia drepanolobium</i> / <i>Terminalia</i> spp. over <i>Homalium</i> / <i>Dipterocarp</i> / <i>Diglossa</i> spp.</li> <li><b>Scrubland</b>: Semi deciduous woodland with occasional tall trees; short grass cover of <i>Brachiaria</i> spp., <i>Loudia</i> spp., <i>Andropogon</i> spp.</li> <li><b>Grassland</b>: Very variable in species composition, which is determined by soil type and moisture.</li> <li><b>Aluvial Complex</b>: Predominantly <i>Calliandra</i> woodland with <i>Terminalia</i> spp. / <i>Croton</i> spp. / <i>Leucaena</i> spp. / <i>Acacia</i> spp. / <i>Prosopis</i> spp. / <i>Commersonia</i> spp. / <i>Albizia</i> spp. / <i>Leucaena</i> spp. / <i>Acacia</i> spp. / <i>Prosopis</i> spp. / <i>Commersonia</i> spp. / <i>Albizia</i> spp.</li> <li><b>Riverine</b>: Woodland or savanna woodland, <i>Acacia</i> spp. / <i>Terminalia</i> spp. / <i>Leucaena</i> spp. / <i>Albizia</i> spp. / <i>Prosopis</i> spp. / <i>Commersonia</i> spp. / <i>Albizia</i> spp.</li> </ul>	<ul style="list-style-type: none"> <li><b>1. Meander Belt</b>: A belt of recent alluvium with levees, oxbow lake deposits, abandoned channels and meanders.</li> <li><b>2. Distributary Alluvial Aids</b>: Almost flat with rivers dividing into channels separating into distributaries of old alluvium.</li> <li><b>3. Dissected Valley Floor</b>: Low many branched interfluvial dissected by a dendritic drainage pattern.</li> <li><b>4. Dissected Valley Floor with Ridges</b>: Low interfluvial with meandering ridges and hills.</li> <li><b>5. Domed Grass Plains</b>: A broad domed landscape on mudstone.</li> <li><b>6. Broad Interfluvial</b>: Low undulating landscape of convex interfluvial and broad depressions.</li> <li><b>7. Flat Valley Bottom</b>: An almost flat or gently rising landscape of new and old alluvium.</li> <li><b>8. Broad Escarpment</b>: Variable landscape of undulating plateaus.</li> <li><b>9. Multiple Escarpment</b>: A long and steep escarpment with deeply dissected valleys.</li> </ul>

Compiled by W. L. Astle, Queen Mary College, University of London from aerial photography 1960 and 1967, field work 1968, 1972 and 1980 to 1985, prepared in 1982 and revised 1985. Aerial photography taken by S. D. Pearce, W. L. M. King, R. C. Platt, assistance with names from P. S. M. Berry and B. Chikanda. Logarithmic projection by Walter Meisner, Ltd. Based on 1:50,000 Topographic Maps, Republic of Zambia, with permission of the Surveyor General. Copyright reserved W. L. Astle 1989. Cartography by Lovell Johns Ltd., Oxford, England.